

# WARRANTY CARD



**Planet Power Tools Pvt. Ltd.**

Name of Purchaser .....

Address : .....

Product **ANGLE GRINDER** .....

Model No .....

Sl. No. ....

Date of Purchase .....

Invoice No. ....

Armature No .....

Dealers Stamp \_\_\_\_\_

Signature

PG 600/PG 1003/PG 1005/PG 1006  
PG 1007/PG 600-05/PG 125/PG 5

## ANGLE GRINDER INDUSTRIAL

### HANDLING INSTRUCTIONS



Read, Understand Carefully & Follow These Instructions While Operating Tool.

**India's Leading Power Tool Brand**



Manufactured and Marketed by :  
**PLANET POWER TOOLS PVT. LTD.**  
GIDC Ind. Estate, P.O. Kabilpure, Navsari - 396424, Gujarat.  
For Customer Care Number : (022) 4067 6105.  
E\_mail : [mumbai@planetpowertools.com](mailto:mumbai@planetpowertools.com)



## WARRANTY

# CONGRATULATIONS; YOU ARE NOW A PROUD MEMBER OF THE PLANET POWER PARIVAR

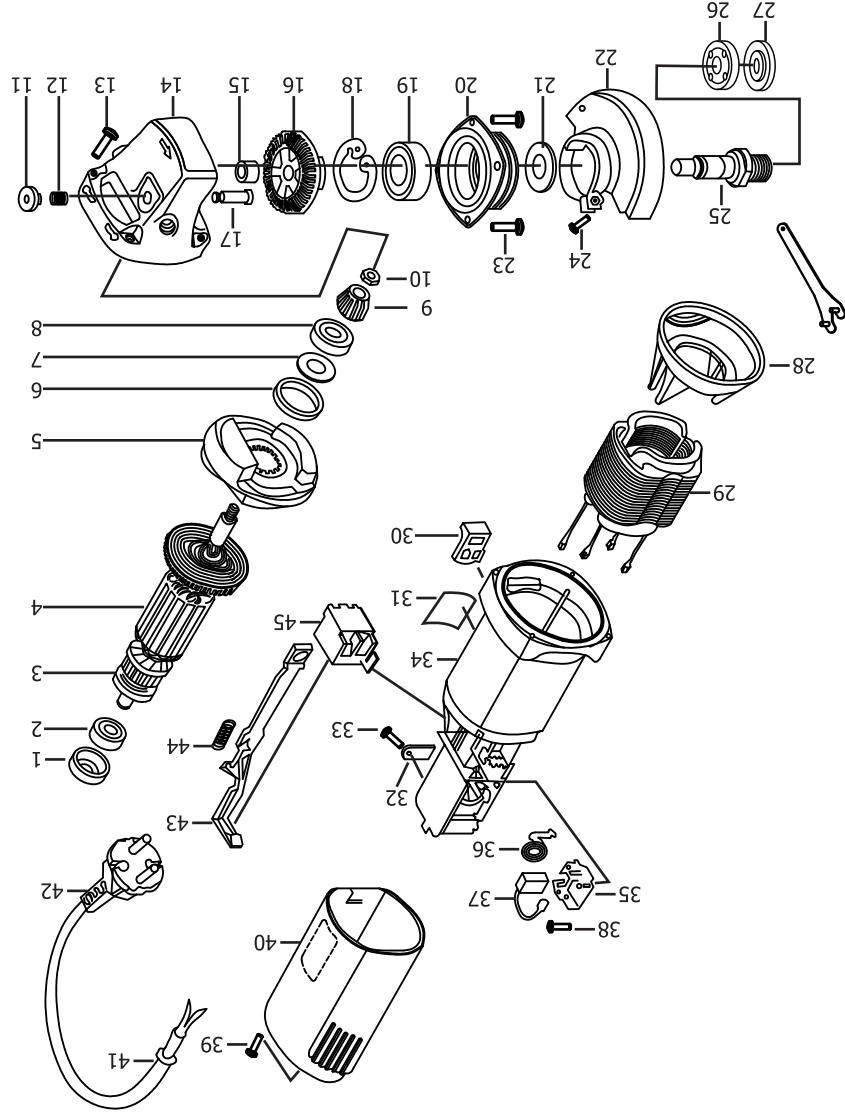
All the tools manufactured by Planet Power Tools Pvt Ltd undergo a series of rigorous inspection procedures ensuring that you only get a world class power tool.

All Products manufactured by Planet Power Tools Pvt. Ltd. are covered by an international warranty valid for six (6) months from the date of purchase. This comprehensive warranty® covers the parts as well any defects arising out of faulty manufacturing of the tool.

®The Warranty **DOES NOT** apply to:

- Components subject to normal wear and tear e.g. Carbon Brushes, Brush holders, plug and cord assembly, drill chucks batteries, flanges etc.
- Unless expressly stated; any and all attachments supplied with the tool.
- Unauthorised repairs, alterations and modifications.
- Damage caused due to dust, slurry, and any foreign objects as well as due to improper use or an accident
- Damage due to voltage fluctuations

PG 600/PG 600-05



## GENERAL OPERATIONAL PRECAUTIONS

### 1. DON'T USE / EXPOSE

- In presence of flammable liquids or gases.
- To the rain.
- In damp or wet locations.
- If switch does not turn it ON and OFF.
- Grinding wheel such as crack, & surface defects.

**f) Solvents such as Thinner, Gasoline, Benzene, Alcohol, Ammonia, etc.**

### II. USE

- Proper voltage power source, according to the specification.
- Extension Cords which are intended for outdoors, during outdoor use.
- Clamps or vise to hold work.
- Safety glasses.
- Protective hair covering.
- Wear rubber hand glove.
- Wear Non-skid rubber footwear.
- Only Original spares.

### III. CHECK/ENSURE

- Power switch is in OFF position, prior to operation.
- The motor winding does not become damaged / wet with oil or water.
- Regularly inspect all mounting screws and ensure they are properly tightened.
- Alignment of moving parts.
- Binding of moving parts.
- Breakage of mountings.
- The Carbon Brush wear limit.

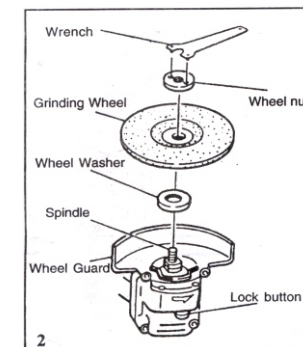
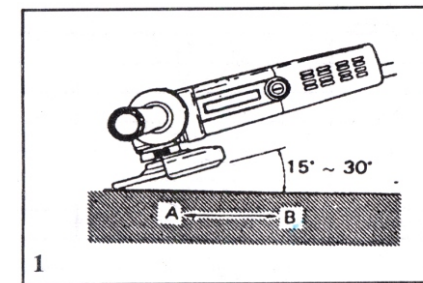
### 1. Never carry tool by cord.

- Power tools should be stored in cool and dry area.
- Inspect tool cords/extension cords periodically.
- 4. Start grinding operation when full speed has been reached.**
- Do not touch movable parts or accessories, unless the Power source has been disconnected.
- Follow instructions for lubricating and changing accessories.
- Disconnect tools when servicing and changing accessories.
- 8. Remove adjusting keys, wrenches before turning it ON.**
- Always take care in preventing the power cord from coming in contact with revolving Grinding Wheel.
- Keep children away, during operation.
- Never operate Grinder without Wheel Guard.

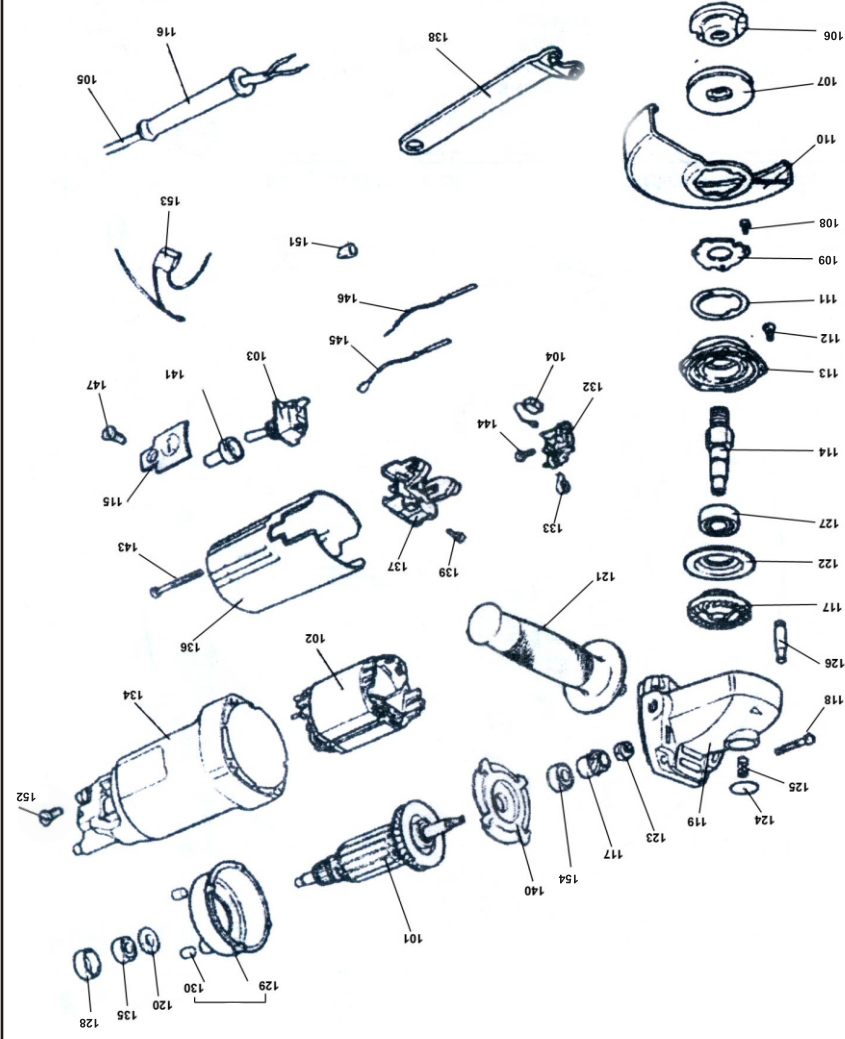
## Part List

Sr. No.	Description
1	Bearing Cover
2	Ball Bearing(607)
3	Plate
4	Armature
5	Gear Housing Cover
6	Ring
7	Seal
8	Ball Bearing (608)
9	Gear Pinion
10	Nut
11	Lock Cap
12	Spring
13	Screw
14	Gear Box
15	Bearing (0810)
16	Gear
17	Lock Pin
18	O Ring
19	Ball Bearing (6201)
20	Gear Cover
21	Plate
22	Wheel Guard
23	Screw
24	Screw
25	Spindle

Sr. No.	Description
26	Washer A
27	Washer B
28	Fan Guide
29	Stator
30	Switch Knob
31	Name Plate
32	Cord Clip
33	Screw
34	Housing
35	Carbon Support
36	Brush Spring
37	Carbon Brush
38	Screw
39	Screw
40	Tail Cover
41	Cord Clip
42	Cord
43	Switch Lever
44	Spring For Switch Lever
45	Switch



# PG 1005/PG 1006/PG 1007/PG 5



4

1. Pressure

To prolong the life of the machine and ensure a first class finish, it is important that the machines should not be over loaded by applying too much pressure. In most applications, the weight of the machine alone is sufficient for effective grinding. Too much pressure will result in reduced rotational speed, inferior surface finish, and overloading which could reduce the life of the machine.

2. Grinding angle  
Do not apply the entire surface of the grinding wheel to the material to be ground As shown in Fig. 1, the machine should be held at an angle of 15°-30° so that work piece at an optimum angle.  
3. To prevent a new grinding wheel from digging into the work place, initial grinding should be performed by drawing the grinder across the workpiece toward the operator (Fig. 1 direction B). Once the leading edge of the grinding wheel is properly abraded, grinding may be conducted in either direction.

4. Precaution immediately after finishing operation.  
After switching off the machines, do not put down until the grinding wheel has come to a complete stop. Apart from avoiding serious accidents, this precaution will reduce the amount of dust swarf sucked into the machine.

## ASSEMBLING AND DISASSEMBLING THE GRINDING WHEEL (FIG.2)

Caution: Be sure to switch power Off and disconnect the attachment plug from the power receptacle to avoid serious trouble.

### 1. Assembling (Fig.2)

- (1) Turn the equipment upside down so that the spindle will be facing up.
- (2) Mount the wheel washer onto spindle.
- (3) Fit the protrance of the grinding wheel onto the wheel washer.
- (4) Screw from above the wheel nut onto the spindle.
- (5) As shown in Fig. 2 push in the lock pin to prevent rotation of the spindle. Secure the grinding wheel by tightening the wheel nut with the wrench.

**Cautions :** Confirm that the grinding wheel is mounted firmly confirm that the lock Button is disengaged by pushing lock Button two or three times before switching the power tool on.

### 2. Disassembly

Follow the above procedures in reverse.

**Cautions :** Confirm that the grinding wheel is mounted firmly. Confirm that the lock Button is disengaged by pushing lock Button two or three times before switching the power tool on.

## MAINTENANCE AND INSPECTION

### 1. Inspecting the carbon brushes

The motor employs carbon brushes which are consumable parts. Since an excessively worn carbon brush could result in Motor trouble, replace the carbon brush when it become worn out or near the "wear limit". In addition, always keep carbon brushes clean and ensure that they slide freely within the brush holders.

9

## SPECIFICATIONS

Model	PG 600	PG 1003	PG 1005	PG 1006	PG 1007	PG 600-05	PG 125	PG 5
Capacity	100mm	100mm	100mm	100mm	100mm	125mm	125mm	125mm
Spindle	M-10	M-10	M-10	M-10	M-10	M-14	M-14	M-14
Voltage	230V~	230V~	230V~	230V~	230V~	230V~	230V~	230V~
Power Input	850W	950W	950W	1000W	950W	850W	1150W	1100W
No-Load Speed	11,000 RPM	11,000 RPM	11,000 RPM	11,000 RPM	11,000 RPM	11,000 RPM	10,000 RPM	10,000 RPM
Weight	1.6 kg	1.5 kg	1.8 kg	1.8 kg	1.8 kg	1.6 kg	1.9 kg	1.8 kg

## STANDARD ACCESSORIES

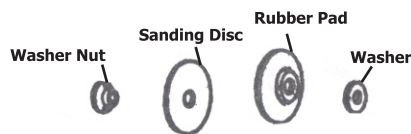
1. Wrench .....1
2. Side Handle .....1

Standard accessories are subject to change without notice.

## OPTIONAL ACCESSORIES

Caution : Always operate the grinder with wheel guard attached.

1. Grinding Wheel
2. 100mm/125mm Sanding Disc Set



In case when only a relatively small metal surface area is to be polished and it is desired to give it a particularly polishing one metal surface before applying paint for removing rust and removing paint when a new coat of paint is to be applied. There are eleven different kinds of sanding discs, having grains of # 16, # 20, #24, #30, #36, #40, #50, #60, #80, #100, #120. When placing your order, please specify the grain of the disc desired.

## APPLICATIONS

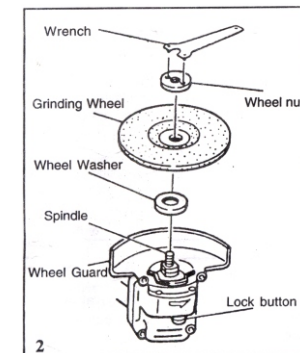
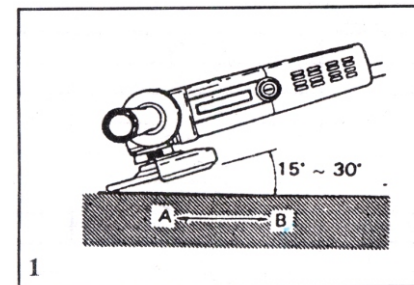
Removal of casting fin and finishing of various types of steel, bronze and aluminium materials and castings.

Grinder of welded sections or sections cut by means of welding.

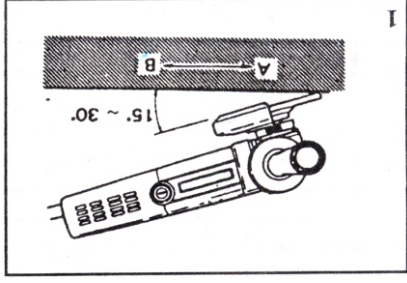
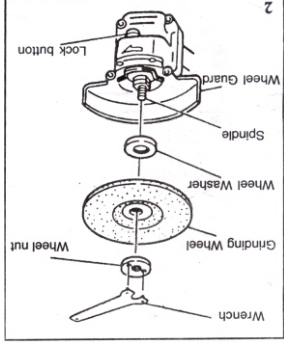
Grinder of synthetic resins, slate, brick, marble, etc.

## Part List

Sr. No.	Description	Sr. No.	Description
101	Armature	126	Lock Pin
102	Stator	127	Ball Bearing (6201)
103	Switch	128	Bearing Cover
104	Carbon Brush	129	Fan Guide
105	Cord Assembly	130	Bumper
106	Wheel Nut	132	Brush Holder
107	Wheel Washer	133	Brush Spring
108	Screw	134	Housing
109	Flange	135	Ball Bearing (607)
110	Wheel Guard	136	Tail Cover
111	Spring Guard	137	Switch Holder
112	Screw	138	Wrench
113	Packing Gland	139	Screw
114	Spindle	140	Fan Flange
115	Brush Cover	141	Switch Cover
116	Cord Armor	143	Screw
117	Gear & Pinion	144	Screw
118	Screw	145	Lead Wire
119	Gear Cover	146	Lead Wire
120	Distance Spacer	147	Screw
121	Side Handle	151	Cord Clip
122	Gear Flange	152	Screw
123	Nut	154	Ball Bearing (608)
124	Lock Button		
125	Spring		



Sr. No.	Description
26	O Ring
27	Packing gland
28	Washer
29	Washer
30	Screw
31	Dust cover
32	Key
33	Spindle
34	Clamp nut
35	Wheel guard
36	Inside flange
38	Outside flange
40	Motor housing
41	Brush holder
42	Screw
43	Brush Spring
44	Carbon brush
45	Cable plate cover
46	Screw
48	Condensor
49	End cover
50	Cord armour
51	Cable
52	Switch



Sr. No.	Description
1	Stator
2	Fan guide
3	Bearing sleeve
4	Ball bearing (607 ZZ)
5	Dust seal
6	Armature
7	Inner cover
8	Rubber ring
9	Ball bearing (629 ZZ)
10	Pinion
11	Hex nut
12	Lock pin
13	Spring of pin
14	Washer ring
15	Screw
16	Gear cover
17	Side handle
18	Rubber bumper
19	Ball bearing (606 ZZ)
20	Washer
21	Wave spring
22	Gear
23	Circlip
24	Ball bearing (6201 ZZ)
25	Dust protection sleeve

Part List

